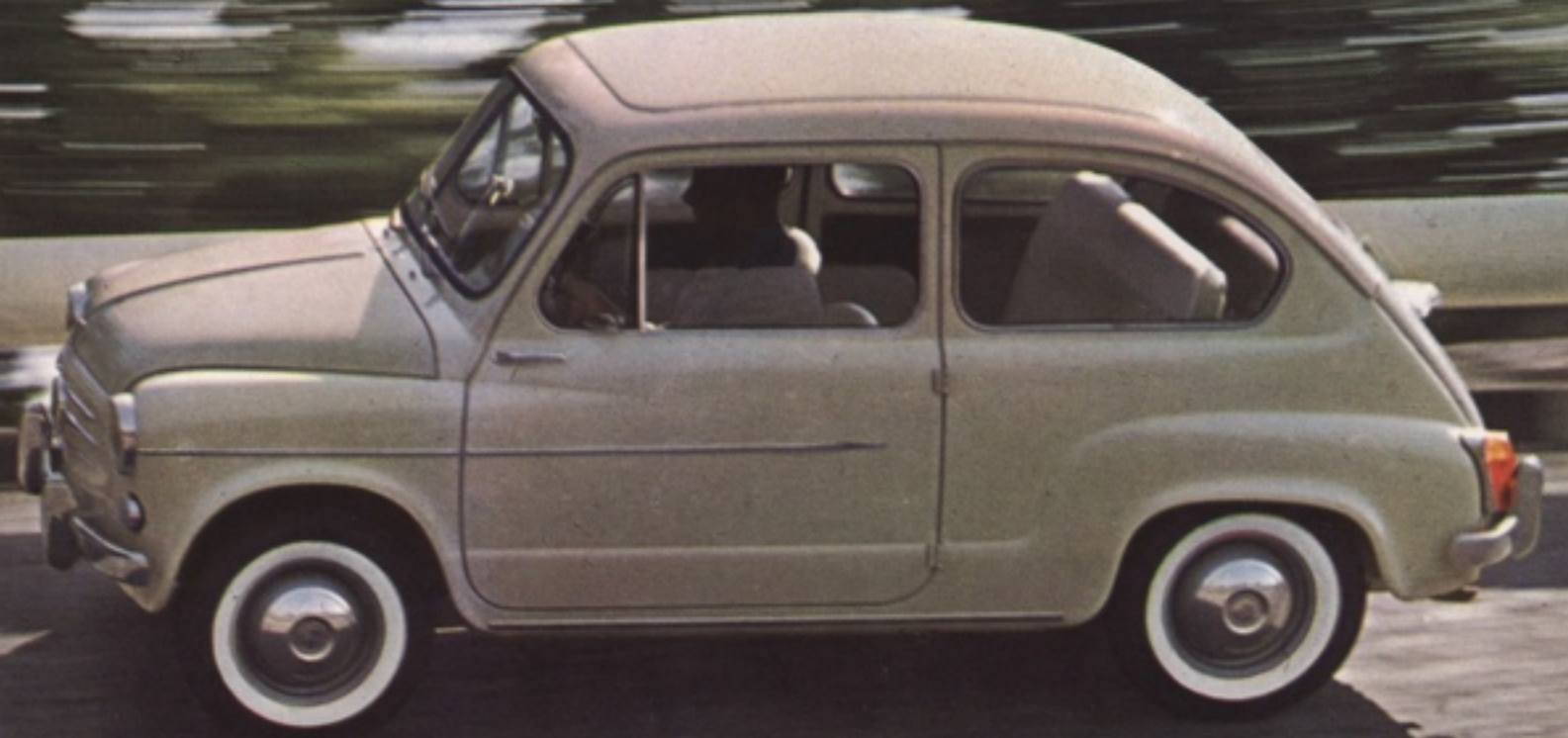
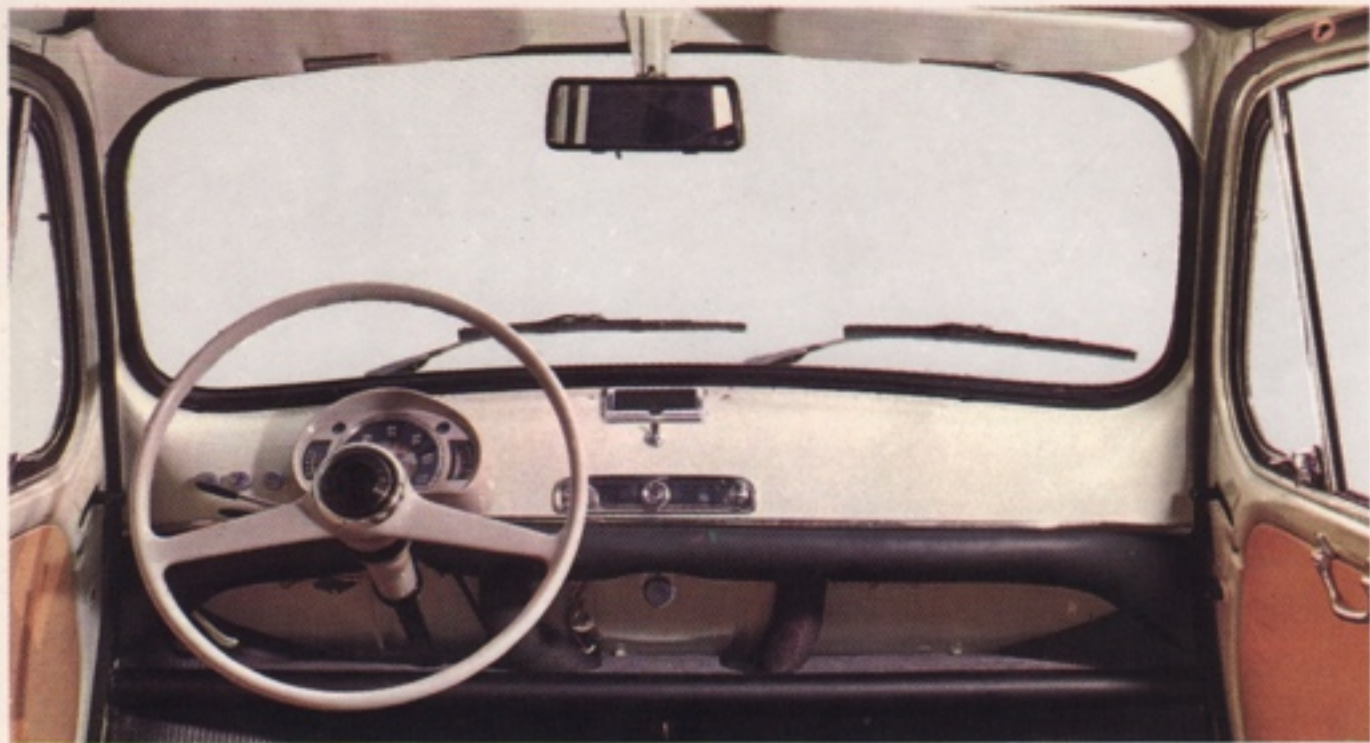


FIAT
600 D





Padded dashboard with close-at-hand controls. Instrument panel grouped for at-a-glance reading. Conveniently located ashtray. Spray-type windshield wipers are standard equipment.

Fiat 600 D

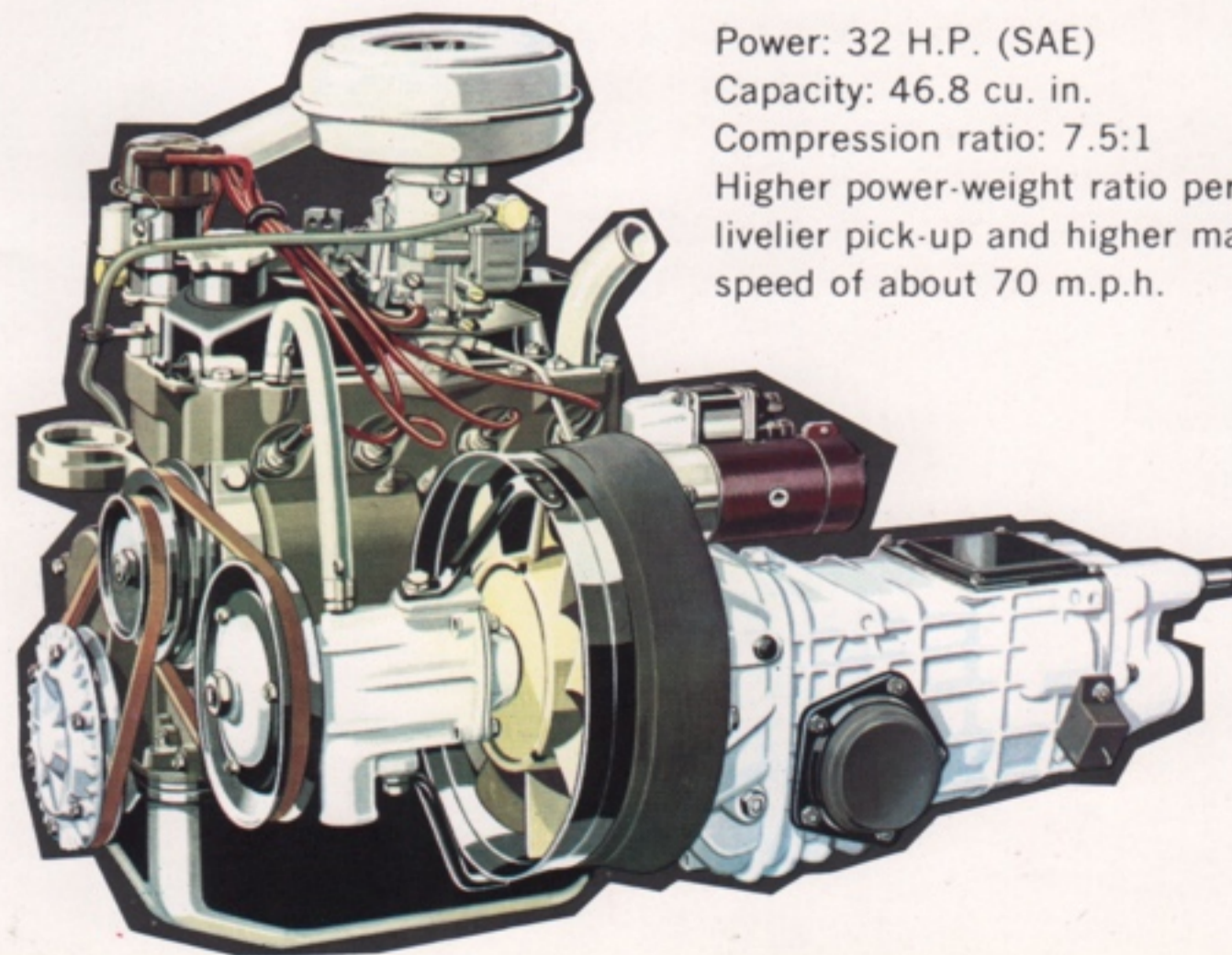
"for your motoring pleasure!"



Well-lighted interior to seat four adults comfortably. Back of rear seat folds down to provide added luggage area when needed.

Fiat 600 D

"for economy and dependability"

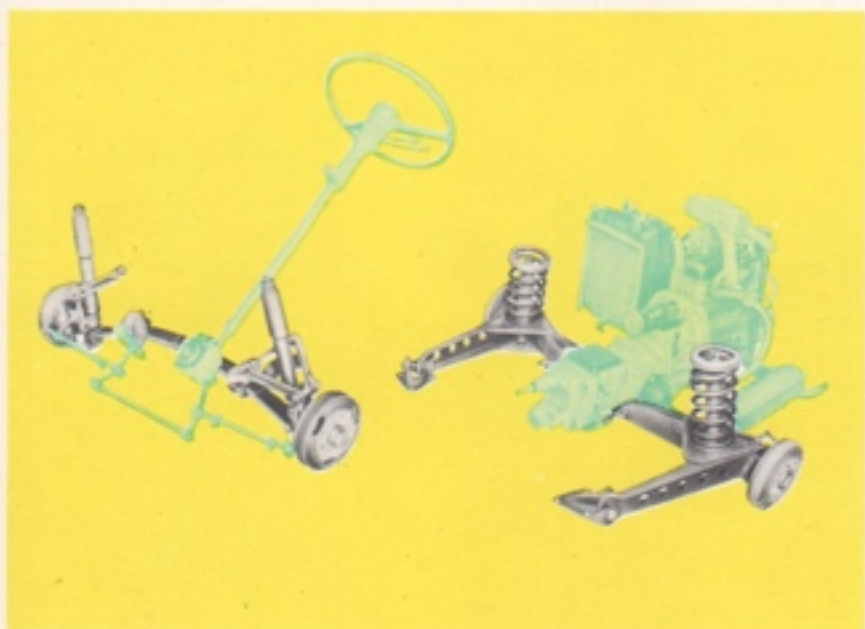


Power: 32 H.P. (SAE)
Capacity: 46.8 cu. in.
Compression ratio: 7.5:1
Higher power-weight ratio permitting livelier pick-up and higher maximum speed of about 70 m.p.h.





Engine, clutch, bevel-drive, differential and transmission all packed in a single unit easily accessible, located at the rear end of the Fiat 600D for better weight balance. The excellent road holding provided by the 4-wheel independent suspension is further improved by the added weight on the rear of the car. The O.H.V. engine is water cooled.



The 4-wheel independent suspension insures maximum road holding. On the front suspension a transverse leaf spring acting as a stabilizer is connected to the frame at two points by rubber mountings. The rear suspension is by swing arms with coil springs, and telescopic hydraulic shock absorbers.

technical data

Unibody construction. Wheelbase 78.75". Front track 45.30", rear 45.67".

Engine: 4 cylinders. Capacity 46.8 cu. in. Bore 2.45". Stroke 2.50". Compression ratio 7.5:1. Maximum power 32 h.p. (SAE). Cast iron crankcase, aluminum head, 3 bearing crankshaft, camshaft-actuated push-rod OHV gear. Downdraught carburetor with choke, air intake with filter and silencer; diaphragm fuel pump; forced lubrication by gear pump; centrifugal and by-pass oil filter; conventional water cooled engine with thermostat control; solenoid operated starter-motor. Combined engine-gearbox-differential unit mounted in rear compartment.

Clutch: single dry-plate.

Traction on rear wheels through 2 half-axles connected to the differential by universal joints.

Differential and final drive gears incorporated in gearbox; ratio 8/39.

Transmission: 4 speeds and reverse; constant mesh 2nd, 3rd and 4th gears with synchronising rings on 2nd, 3rd and top gears.

Steering: helical worm and sector.

Front suspension: independent wheels. Transverse leaf spring connected to body at two points, acting as a stabiliser during asymmetric movements of the wheels; double-acting telescopic hydraulic shock-absorbers.

Rear suspension: independent wheels with swing arms, coil springs and double-acting telescopic hydraulic shock-absorbers.

Brakes: hydraulic on all 4 wheels; emergency hand brake acting on rear wheel brake shoes.

Disc wheels: with 3½ rims. Size 5.20 x 12 tires.

Fuel tank: in front, capacity 7.2 gals.

Heater and defroster.

Spray-type windshield washer.

Electrical equipment: 12 volts. 240 Watt generator. 53 amp./hr. battery.

Speed: approx 70 m.p.hr.

Dealer's Stamp

The descriptions and illustrations in this catalogue are given merely as general information and are not binding. FIAT therefore reserves the right, whilst maintaining the fundamental features of the models here described and illustrated, to effect at any time and without notice, those alterations to parts, fittings or equipment of accessories that they may eventually think fit to make by way of improvement, or for any reason whatsoever of a manufacturing or commercial nature.

Fiat Press and Propaganda - Edition no. 1651 TER - Printed in U.S.A.

M-F Press